

PCE Staff/Student Portal

Prof. Ms. Manali R. Raut, Trupti P. Lokhande, Karishma D. Godbole

Shruti J. More, Sunena S. Hatmode, Nikita D. Tibude

Assistant professor, Department of Computer Technology

Priyadarshini College of Engineering

Nagpur, Maharashtra

India

ABSTRACT:

PCE(Priyadarshini College Of Engineering) Staff/Student Portal provides a simple interface for maintenance of student–faculty information. It can be used by scholastic institutes or colleges to maintain the records of students easily. The creation and management of accurate, update information regarding a student’s academic career is critically important in the university as well as colleges. Student information system deals with all kind of student details, alumni student data, college details, course details, batch details, placement details and workshop attended other resource related details too. All these will be available through a secure, online alliance embedded in the college’s site .The Staff / Student Portal is the commonly used phrase to describe the login page where student can provide a user name and password to gain access to an scholastic organization’s programs and other learning related materials. For example a beginner who has enrolled in an online certification program may use a student portal to ingress online course materials, such as articles, lectures and videos hosted on the college’s server. Staff/student portal is also used to provide information about the college, special events, course details, calendars, academic resources and contact material.

Keywords:- Database, HTML, PCE Staff/Student Portal College Portal, SQL.

I. INTRODUCTION

The PCE Staff/Student Portal is a web portal where all information and all services that students need can be found in one place. The Portal can be used by all student registered at PCE Staff/Student and all faculties of PCE portal. This venture is an online portal for students and faculty. This system conceded college faculty of important data gathered. It consists of a faculty login along with student login .In this application all data available such as Alumni student, T&P data, Paper Publication data and Workshop Attended, All the data stored on the portal. The impingement of computers on our lives today is probably much more than we are actually known to. Confiscating good information and transforming it swiftly into products than consumers craving to closeout is the cardinal key to staying in business and this all is done coeval using Computers and Application Software. College Portal defines as an application (more likely web-based), that provides abilities for multiple users with different permission levels to manage (all or a section of) content, data or information of a website project, or internet / web application. The software helps Managers to plan and control the organizational autopsy and to respond to changing market autopsy. It provides a regular flow of information for managerial decision-making and abstain.

A) Objective

The main purpose of this system, is to etract the consumption of time during maintaining the records of college. Separate divisions are providing to maintain the records of teachers students students. Our System also procure an easy way not only to automate all functionalities of a college, but also to procure full functional reports to top management of college with the finest of details about any phase of college. In other words, our college portal has, following objectives: Simple database is maintained. Easy operations for the operator of the system. User interfaces are user accommodating and attractive; it takes very less time for the operator to use the system. The aim is to design a college website which implant update information of the college that should improve expertness of college record management.

B) Problem Statements

There are many problems found in the todays portal system. The problems created in theexisting system enforced us to develop the new system which minimize the problem of the existing system. These problems are:Now a days the system in college like entering papers details in only department level of

papers data is done manually which consumes lots of time .It's application depends works on minimum peoples that is department level.

The objective of PCE Staff/Student portal is to provide an online web based solution for academic use. In this application all data available such as Alumni student, T&P data, Paper Publication data and Workshop Attended . Easy to use futures help our students and staff organize and access information about all aspects of the Alumni student, T&P data, Paper Publication data and Workshop Attended in college.Problem Statement Today's education scenario is rapidly changing and demanding. The system commands greater levels of communication between college, student and faculty members to have perfect use of resources. Today's industry talent commands are float with more and more skills requirements in all fields. Colleges and institutions generating creative students' needs concerned approach on such talents and industries so as assist best of benefits to their candidates passing out. Online College Portal is a system fulfilling these claim and enacting as a bridge of communication amongst students, faculties and colleges.

II. LITRATURE REVIEW

The GHRCE Student Portal is a web portal where whole acquaintance and all organisation that students need can be found in one settle. The information on the Student Portal is for agile students at GHRCE build. Student Portal is a system for wisdom and study administration that is used by students, teachers, and administrators at GHRCE build. What aid texts are displayed lean on whether you are stuffy in or not and whether you are a student or an administrators. Keeping the congruent in mind, we the Raisoni Group have developed learning platforms for the students and learners to abet in establishing new milestones, successful ventures an prolifaret lives. Online College Portal (OCP) provides a simple interface for prolongation of student–faculty information. It can be used by educational institutes or colleges to prologat the records of students patently. The GHRCE Student Portal is a web portal where every information and all services that students need can be found in one reside. The Portal can be used by every student registered at GHRCE and all faculties of GHRCE. Today's era maintaining manually record of particular person attendance is most awkward task in the industries, universities or working settle[1]. It help to generate monthly oversee sheet. Manual attendance system required countless paper work and calculations and there will be great chances of errors. To save the time of maintain lecture trade data and average attendance of

each student Online College Portal system intent to improve the efficiency of college information management, and the main function is managing and maintaining information[2]. The administrator and students are two general actinic requirements in the system. The Administrator will be given extra energy (enable/disable/ update) than other users. The student and staff information system that aid to users can fluently store the students and staffs information through online[3]. The user can fearlessly store and retrieve the data by department wise through online. This system helps the user to generate the dynamic legwork. So the user can convenient to interact with the system to store and accessibility the resources through internet or intranet. This system helps Company to accessibility the student information with regards to placement[4]. Computer based information system are designed to repair existing system. Company can notify the students about the recruitment online via sending message using message notification gateway.

III . PROPOSED METHODOLOGY

The objective of PCE Staff/Student Portal is to provide an online web based solution for academic use. In this application all data will be available such as Alumni student, T&P data, Paper Publication data and Workshop Attended. It is Easy to use. In future it helps our students and staff to organize and access information about all aspect of the Alumni student, T&P data, Paper Publication data and Workshop Attended in college. This website provide a way for student and faculty to communicate to each other .this will solve all drawbacks of manual process ,increase the efficiency and speed up all works to be completed. At college managements side a person can view the most important student and staff data such as Alumni, paper publication etc. Every student and staff will provide with unique login id and password. Also all the data will be at least once the validated from the college database .For this purpose the college database is being retrieved directly. So this process also helps in maintaining consistency and integrity. The student and staff acquaintance system that helps to users can readily store the students and staffs information through online. The user can readily store and retrieve the data by department wise through online. This system helps the user to generate the dynamic legwork. So the user can convenient to interact with the system to readily and accessibility the resources through internet or intranet.

Consider following figures for PCE staff/Student Portal home page, photo Gallery ,alumni Registration, Staff Registration, Student Registration,Methodology and Sequence diagram are created. All figures easily understands the concept of our project.

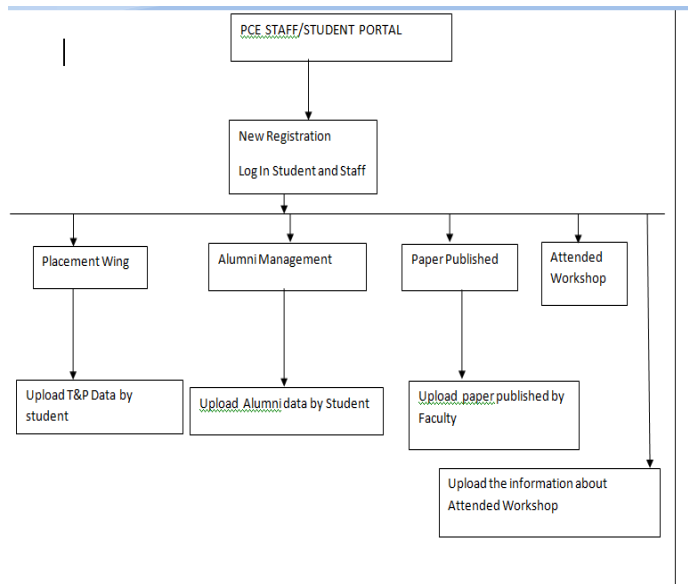


Fig 6. Methodology of PCE staff/Student Portal

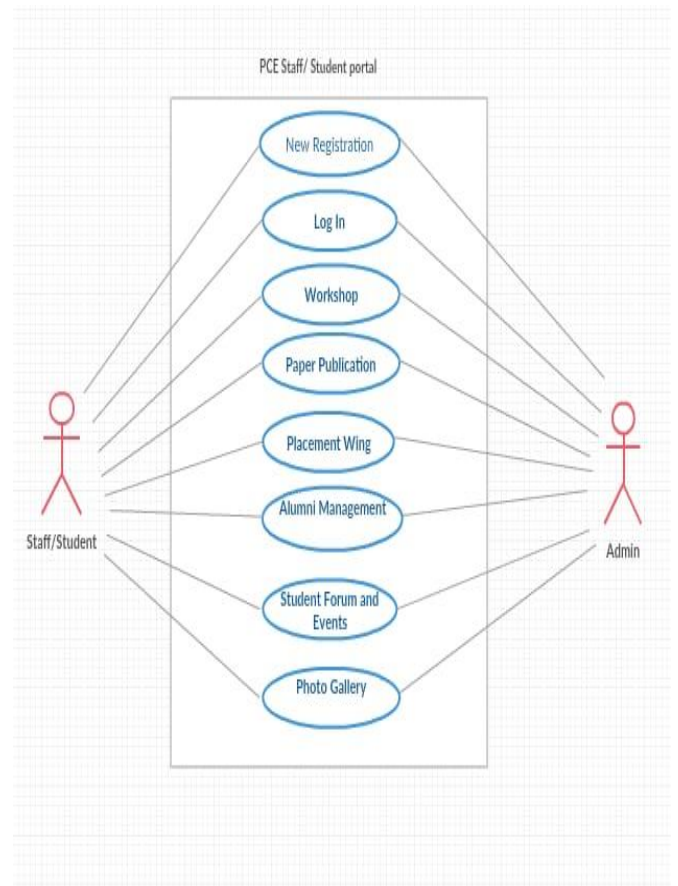


Fig 7. Sequence Diagram of PCE staff/student portal



Fig.1. Home Page

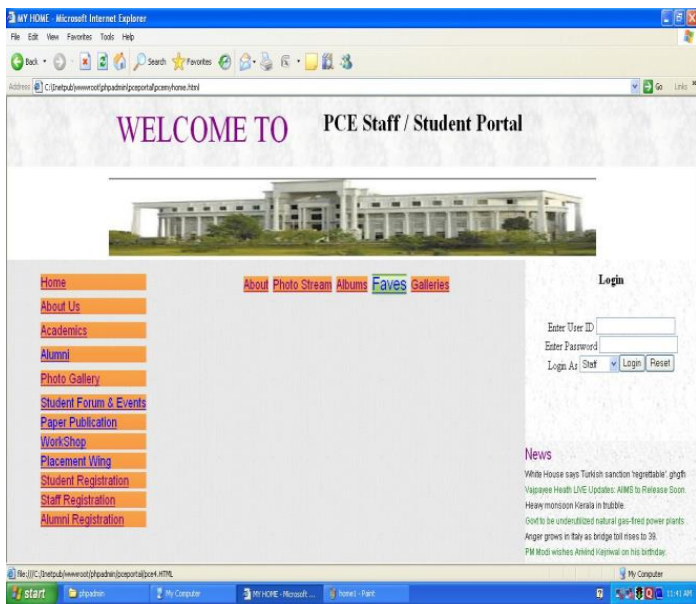


Fig 2: Photo Gallery

A) Student interface

In the student module they can see their research papers, placements data and Alumni of student data. They can view the all papers which are published by student or faculty of our college. Students can upload their papers and also placed student upload their information .all the information show to authorized person.

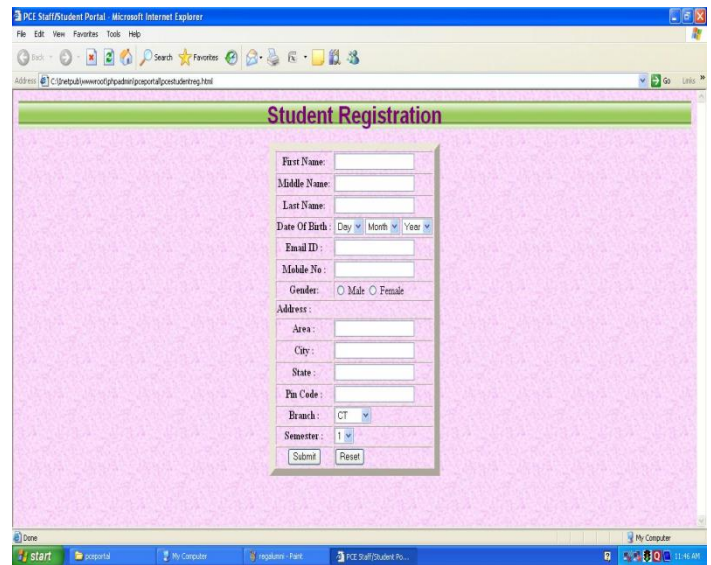


Fig 3: Student Registration

B) Faculty module

In the Faculty module they can see their research papers, placements data and Alumni of student data. They can view the all papers which are published by student or faculty of our college. Faculties can upload their research papers. All the information show to authorized person.

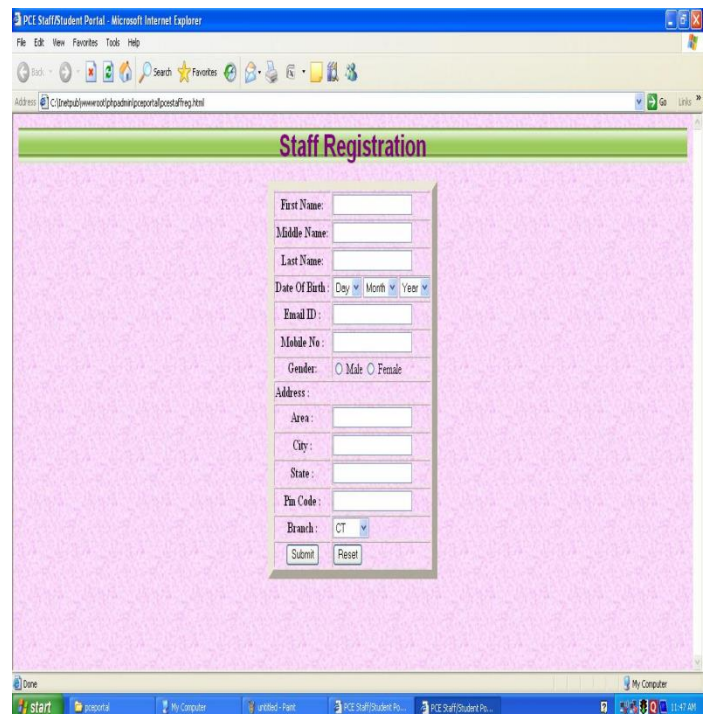


Fig 4: Staff Registration

C) Admin module

Admin module is one on the main module needed in the system it has various modules such as follows: “Alumni and student module” The objective of this application is to allow old and new students of a college to communicate with each other. This asswnt students to know about each other and their extant activities. The Alumni/Students can register themselves and afterwad the approval from the administrator, they can logon into their account and can send mails, post queries, update their profiles and even search for other student details. The module provides mail and query functionalities. Placement is an active after completion of training. Our Application will handle the information of students, Companies, job provider (Placement Officer) etc. Endow preferable service to students and HR Manager (Company). Login Form Registration, For New User Administrator, Menu Form User (Student) Menu Form (User-Side) Search Placed Students Admin side Student Registration Form User Side and Student Registration Form. “Paper Publication module “The prime purpose of us to provide assistance to aspirant via research scholars, professors, big achievers to metamorphose their revived inventive works into forms like case studies, meta-analysis, empirical studies and theoretical articles. All the Published papers are stored on a server.

- Home
- Upload Papers
- Published Papers
- Contact Us

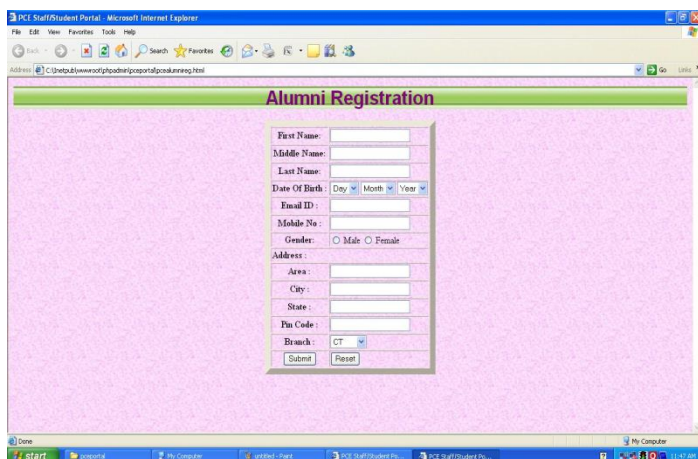


Fig 5:Alumni Registration

D) Technology used

1. Html

HTML is a hypertext mark-up language which is in actuality a phenomenon of any website. Every website can't be framed without the knowledge of html. If we make our web page only with the help of html, than we can't add many of the effective properties in a web page, for making a web page extra effective we use various platforms such as CSS. So here we are using this technologies to make our web pages more active as well as efficient. And to make our web pages dynamic and aggressive we are using Java scrip.

2. CSS

CSS Stands for "Cascading Style Sheet." Cascading style sheets are used to format the arrangement of Web pages. They can be used to define text styles, table sizes, and other phase of Web pages that previously could only be defined in a page's HTML. The basic cause of CSS is to separate the gratified of a web document (written in any markup language) from its bestowal (that is written using Cascading Style Sheets). There are hug amount of asset that one can extract through CSS like improved content convenient, better flexibility and moreover, CSS gives a level of control over various presentation features of the document. It also helps in reducing the complicated and helps in saving overall presentation time. CSS gives the option of selecting various style artifice and rules according to the necessity and it also allows the same. HTML document to be presented in more than one irregular style.

3. PHP

PHP code may be embedded into HTML code, or it can be used in combination with varied web template systems, web content management systems, and web frameworks. PHP code is generally processed by a PHP interpreter implemented as a module in the web server or as a Common Gateway Interface (CGI) executable.

IV. CONCLUSION

In conclusion this project is one of the most crucial stride taken in the development of

Fig 7. Sequence Diagram of PCE staff/student portal

a student and makes the staff very prompt regarding students and college day to day work. This paper aid in automating the existing manual system. This is a paperless work. It can be monitored and guarded remotely. It cut down the man power required and provides accurate information. Malpractice can be pare. All years together huddled information can be saved and

can be accessed at any time. For this reason the data stored in the repository helps in taking decision by management. So it is improved to have a Web Based system. All the stakeholders, faculty and authority can get the required information without delay. This system is crucial in the colleges and universities.

REFERENCES

- [1] <http://ghrce.edu.in/portal/forum.aspx>
- [2] <http://www.projectsjugaad.com/2011/05/online-college-portal-project/>
- [3] <http://yccerresearchportal.org>
- [4] https://www.google.com/search?q=yccer+web+portal+abstract&oeq=yccer+web+portal+abstract&gs_l=psyab.1.0.33i10.9874.12053..16959...1.0..0.349.846.2-2j1.....0....1..gws-wiz.....0i71.OS3X1xgPc7A
- [5] <http://inpressco.com/wp-content/uploads/2015/04/Paper69976-980.pdf>
- [6] <http://rqcer.edu.in/rqcer/electrical-abstract-project-details>
- [7] <http://academicscience.co.in/admin/resources/project/paper/f201804161523881757.pdf>
- [8] <http://www.projectsjugaad.com/2011/05/online-college-portal-project/>